

Digital Torque Meter

# TME3-G

Designed to measure rotating torque of precision parts  
Ideal for Cap Testing



TME200CN3-G

- ✓ "Double peak" hold mode for bottle cap measurement
- ✓ Teardrop Shape saddle rubber allows chucking from  $\Phi$  7 mm of objects
- ✓ Multiple torque units, cN·m, N·m, gf·cm, kgf·cm, ozf·in, lbf·in
- ✓ Accuracy of full scale +/- 0.3% + 1 digit
- ✓ Five models cover the range of 20 to 2000 cN m



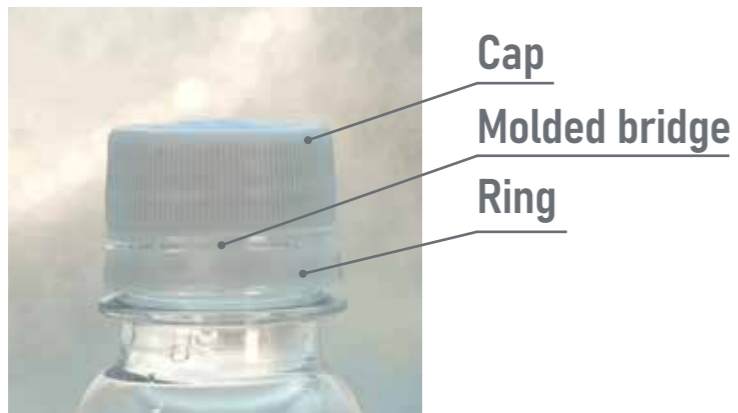
Your Torque Partner  **TOHNICHI**

## Features

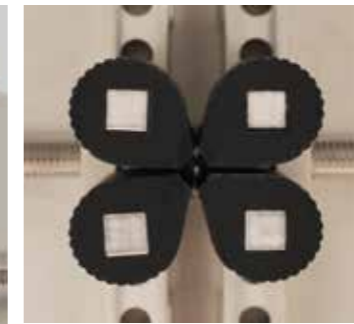
✓ Easy operation with intuitive icon keys



✓ The 1st and 2nd peaks holding function, especially for bottle cap measurement



✓ Special teardrop shape allows chucking from a minimum diameter of 7 mm to maximum 190 mm.



For small objects



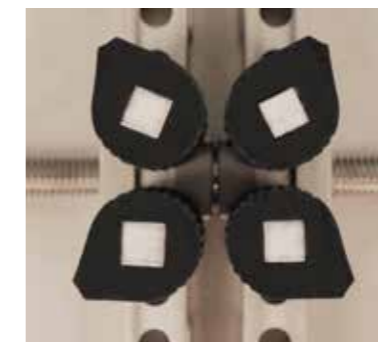
Cosmetic caps



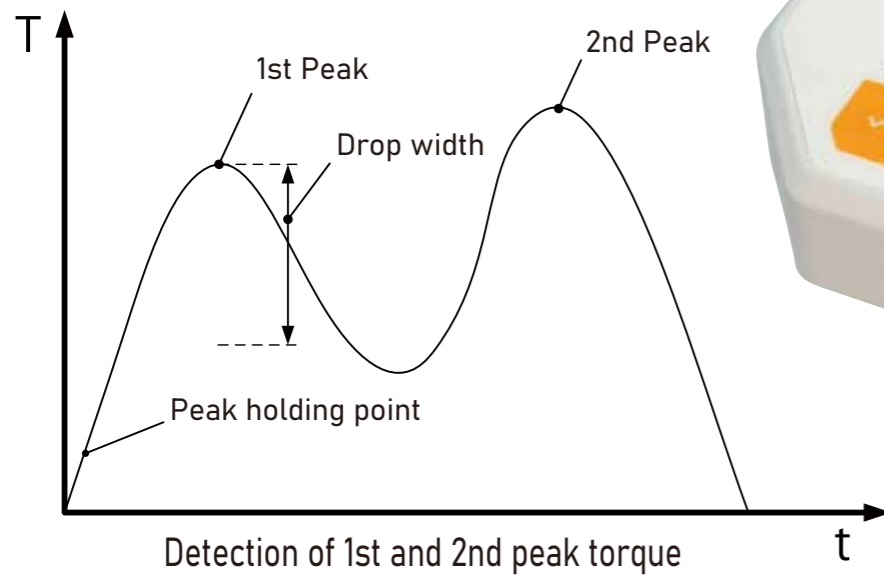
For standard objects



Bottle caps



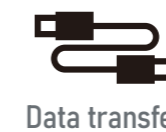
Potentiometers



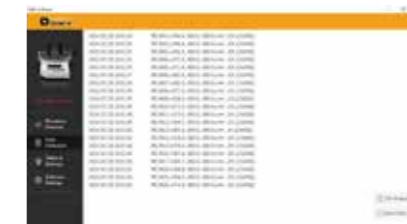
1st peak: Starting point of mold bridge detachment  
 2nd peak: Starting point of cap movement  
 Drop width: Threshold for preserving 1st torque



2 x type C USB port  
Power port / Data port

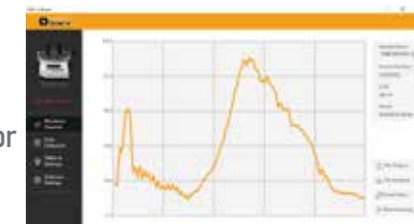


Data transfer



CSV output

or



Graph depiction



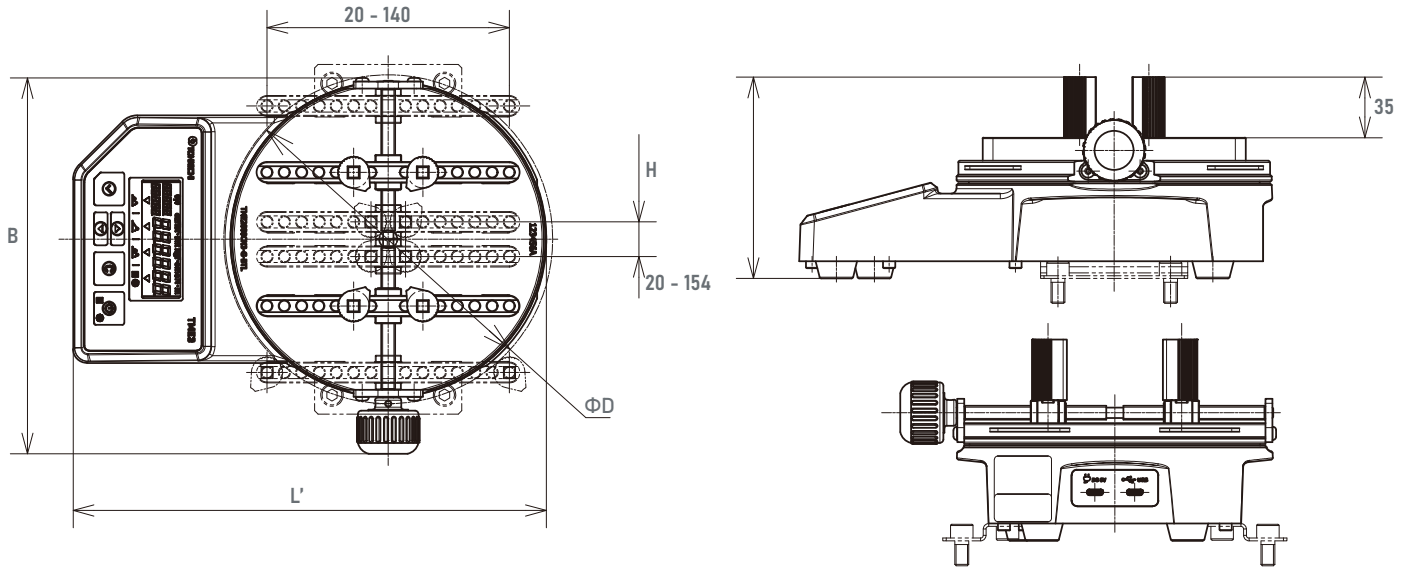
Power source



AC adapter

## ■ Dimensions

[mm]



Accuracy F.S. +/-0.3% +1 digit

| Model        | cN·m     |         | N·m   |         | gf·cm    |         | kgf·cm |         | ozf·in   |         | lbf·in     |         | L'    | B   | H     | ΦD    | Weight [kg] |
|--------------|----------|---------|-------|---------|----------|---------|--------|---------|----------|---------|------------|---------|-------|-----|-------|-------|-------------|
|              | Range    | 1 digit | Range | 1 digit | Range    | 1 digit | Range  | 1 digit | Range    | 1 digit | Range      | 1 digit |       |     |       |       |             |
| TME20CN3-G   | 2-20     | 0.02    | -     | -       | 200-2000 | 2       | 0.2-2  | 0.002   | 2.84-28  | 0.02    | 0.178-1.77 | 0.002   |       |     |       |       |             |
| TME200CN3-G  | 20-200   | 0.2     | 0.2-2 | 0.002   | -        | -       | 2-20   | 0.02    | 28.4-280 | 0.2     | 1.78-17.6  | 0.02    |       |     |       |       |             |
| TME500CN3-G  | 50-500   | 0.5     | 0.5-5 | 0.005   | -        | -       | 5-50   | 0.05    | 71-700   | 0.5     | 4.4-44     | 0.05    | 273.5 | 217 | 116.5 | 7-190 | 3.5         |
| TME1000CN3-G | 100-1000 | 1       | 1-10  | 0.01    | -        | -       | 10-100 | 0.1     | 142-1400 | 1       | 8.8-88     | 0.1     |       |     |       |       |             |
| TME2000CN3-G | 200-2000 | 2       | 2-20  | 0.02    | -        | -       | 20-200 | 0.2     | 284-2800 | 2       | 17.8-177   | 0.2     |       |     |       |       |             |

Standard Accessories: AC Adapter (BA-7), USB power cable, Pole x 4, Support plate (TME500NN3-G to 2000CN3-G only)

## Common Specifications

|                       |   |          |
|-----------------------|---|----------|
| Display               | Counter   | 4 digits |
|                       | Values  | 6 digits |
| Lighting display by ▼ | : Run mode  |          |
|                       | : Peak mode   |          |
|                       | : 1st, 2nd peak (Double peak) mode                          |          |
|                       | : Data calling / Parameter setting                          |          |
| Unit                  | cNm, Nm, gfcm, kgfcm, ozfin, lbf in                         |          |
| External output       | USB connector (Type C) * Applicable to serial communication |          |
| Power supply          | DC 5V 1A  |          |
| AC adapter            | AC 100 - 240V +/-10% 50/60Hz                                |          |
| Power consumption     | 5W or less  |          |
| Operating Temperature | 0 - 40°C (No condensation)                                  |          |



Figure of Calibration kit TMTCL2 with TME3-G

## Optional Accessories

### Connecting Cable

| Model | Description        |
|-------|--------------------|
| 586   | USB type C- type C |
| 587   | USB type C- type A |

### Calibration Kit

| Model  | Applicable Models |
|--------|-------------------|
| TMTCL2 | TME3-G            |

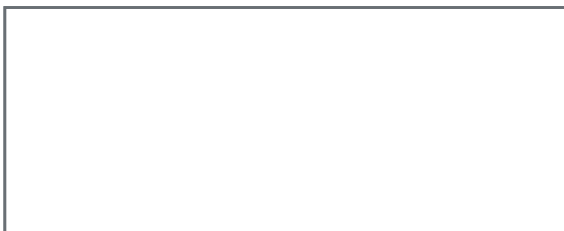
TOHNICHI MFG. CO., LTD.  
 URL <http://www.global-tohnichi.com>  
 E-mail [overseas@tohnichi.co.jp](mailto:overseas@tohnichi.co.jp)

TOHNICHI AMERICA CORP.  
 URL <http://www.tohnichi.com>  
 E-mail [inquiry@tohnichi.com](mailto:inquiry@tohnichi.com)

TOHNICHI SHANGHAI MFG. CO., LTD.  
 URL <http://www.tohnichi-sh.com>  
 E-mail [sales@tohnichi-sh.com](mailto:sales@tohnichi-sh.com)

TOHNICHI EUROPE TECHNICAL SUPPORT OFFICE (TETSO)  
 E-mail [europe@tohnichi.com](mailto:europe@tohnichi.com)

TOHNICHI ASIA TECHNICAL SUPPORT OFFICE (TATSO)  
 E-mail [tatso@tohnichi.com](mailto:tatso@tohnichi.com)



- The appearance and specifications are subject to change for improvement without prior notice.
- All right reserved. No reproduction or republication without written permission.
- ©TOHNICHI Mfg. CO., LTD. All Rights Reserved.

