

BLA

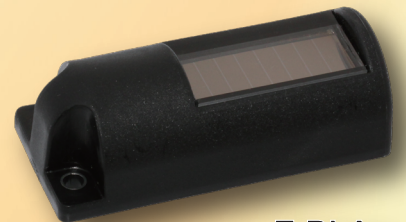
PAT.PEND.

Battery Less Wireless Torque Wrench



R-BLA

- The world's first verification torque wrench with solar power generation. No battery replacement required. Save time for battery replacement and reduce battery cost.
- Easy parameter setting to pair transmitter and receiver.
- Wired LS torque wrench can be converted to battery less torque wrench.



T-BLA

Battery Less Wireless Torque Wrench BLA

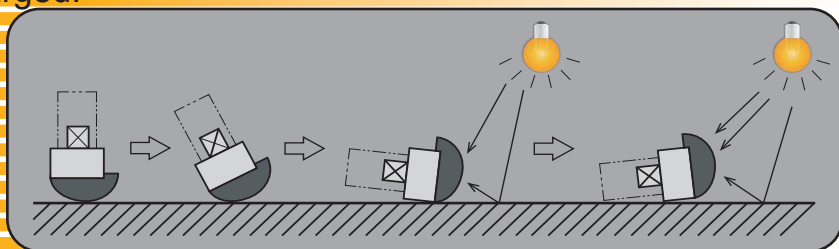
Features

- Wireless error-proofing/Pokayoke torque wrench to eliminate a missed tightening error which is No. 1 human error.
- Adapting solar power generation system. No battery replacement required.
- Capable of charging battery under illuminance 200lx. Illuminance level at a general factory is between 350 and 750lx.
- Operable in the lightless place after solar battery is charged.
 - T-BLA Battery Life
 - Fully charged battery can be used continuously 400 times even under 0lx condition.
- Switching position autonomously to be charged.

Illuminance (lx)	Recommended Indoor Light Levels
2000	
1500	
1000	
750	Supermarkets, Mechanical workshops
500	Office work, PC work, Study library, Groceries, Show rooms, Laboratories
300	Office, Class room
200	Warehouses, Homes, Theaters
150	
100	
75	
200 lx.	The ISO standard ISO 8995-1:2002 (CIE 2001/ISO 2002) states that in the areas where continuous work is carried out the maintained work place illuminance should not be less than 200 lx.
0	



T-BLA



- Just three steps to execute pairing for receiver and transmitter.

Step One

SET & POWER

Step Three

Click!

Step Two

SELECT

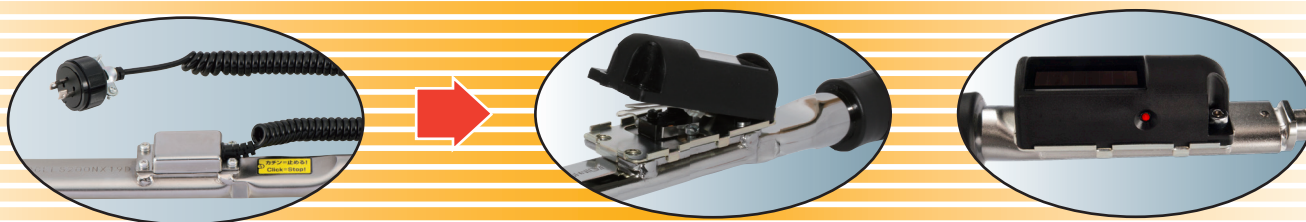
Transmitter ID

TOHNICHI
T-BLA ID: 018A3014

R-BLA

Confirm transmitter ID which is on R-BL's LED.

- Battery less wireless torque wrench can be converted from LS type torque wrench.

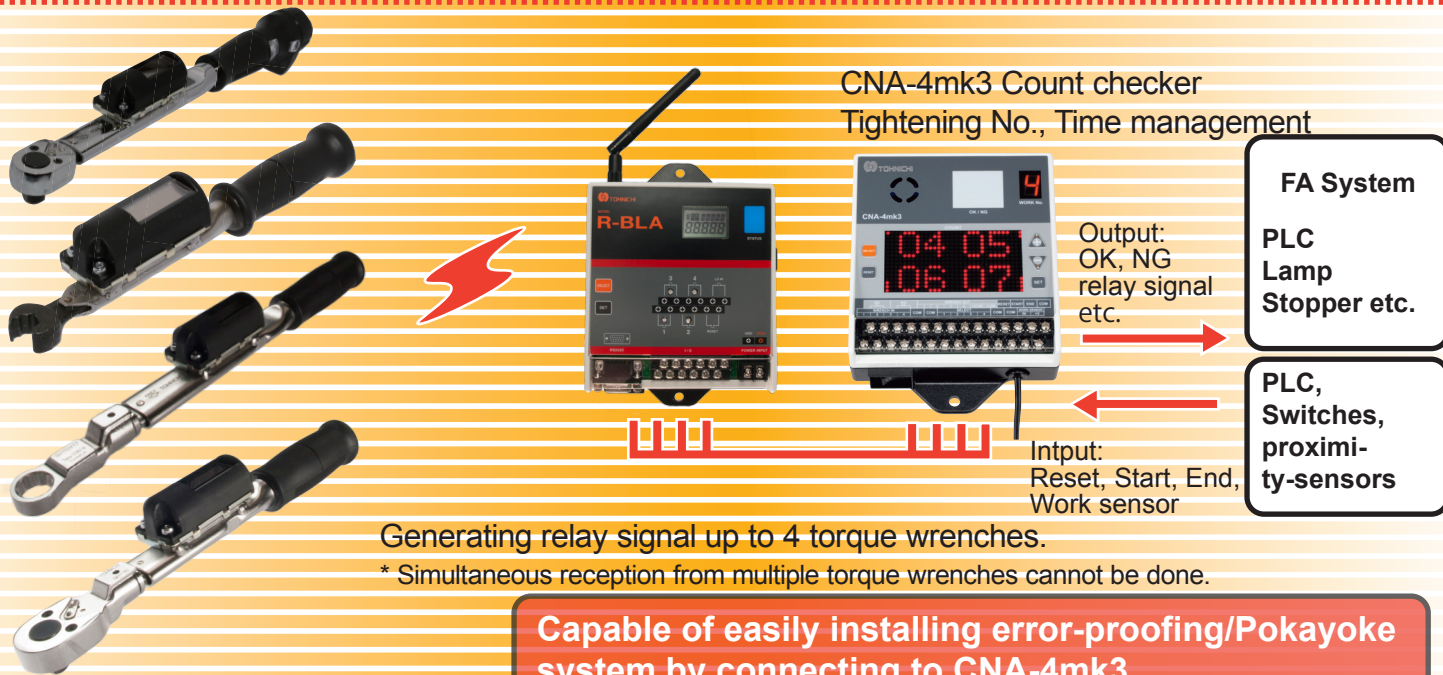


T-BL can be mounted on standard torque wrenches such as QL, QSP, PQL, CL, CSP and PCL models of maximum torque range more than 25Nm and SP/RSP models more than 19Nm of the maximum torque range. For details, consult to Tohnichi distributor or Tohnichi.

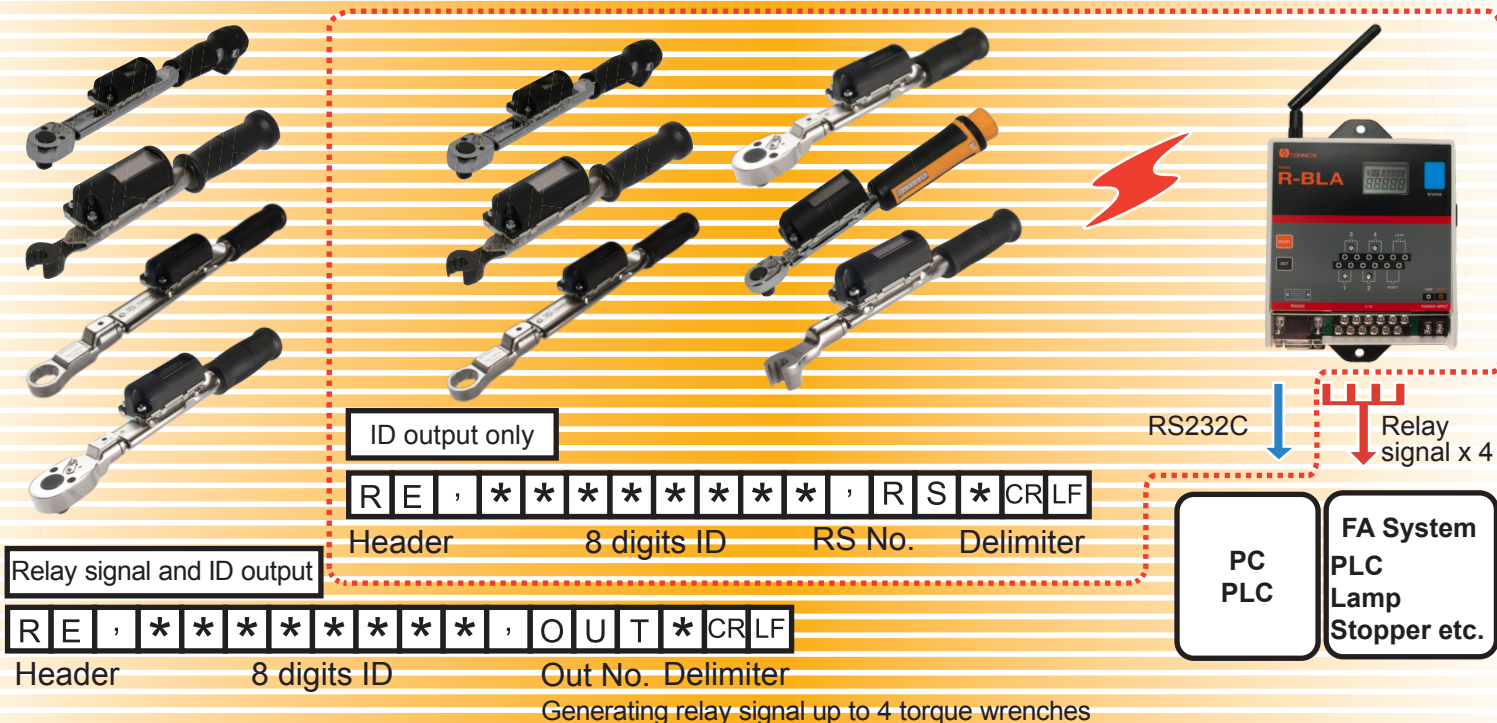
Check communication status with LED on the side of transmitter.

Torque Tightening Proofing System

Configuration example of error-proofing/Pokayoke system sending relay signal.



Configuration example of error-proofing/Pokayoke system sending transmitter ID.



ID output up to 10 torque wrenches

Establishing traceability at assembly line by verifying transmitter ID.

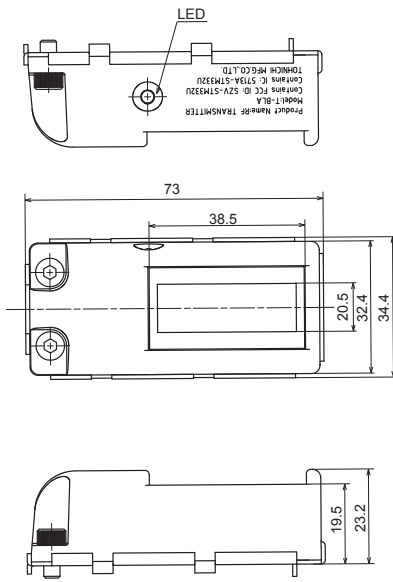
部位A	部位B	部位C	部位D
残軸数 6	残軸数 2	残軸数 2	残軸数 4
軸数 6	軸数 2	軸数 2	軸数 4

TOHNIUCHI USB-BL 締め付け管理ソフト

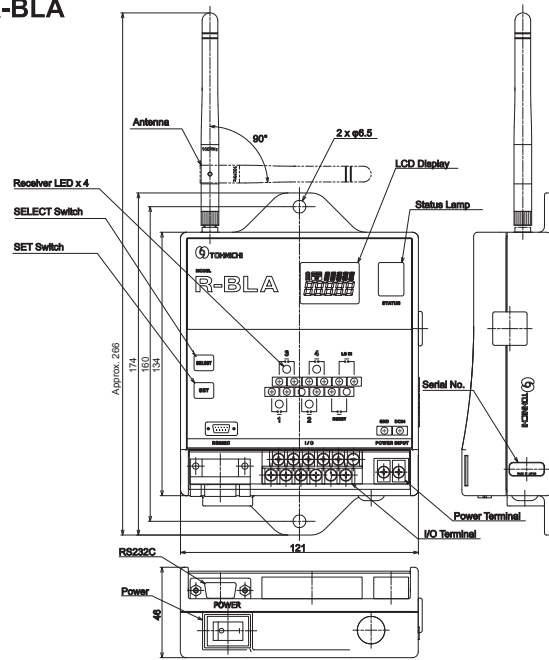
2015年05月23日 10:51:37

* Example of tightening management software.

T-BLA



R-BLA



Specifications

Model	Transmitter			Receiver		
	T-BL	T-BLA	T-BLE	R-BL	R-BLA	R-BLE
Frequency	928.35MHz	902.875MHz	868.3MHz	928.35MHz	902.875MHz	868.3MHz
Modulation Method	FSK					
Modulation Speed	125 kbps					
ID	ID 8 digits fixed, not selectable					
Input/Output	LED in red			Output: Relay x 4, RS232C Input: Reset-in, LS-in		
Power Supply	Solar cell			DC 24V (DC18-36V) Power consumption less than 5 W		
Antenna	Helix antenna	Whip antenna	Helix antenna	Dipole antenna		
Temperature in Use	0 - 40°C					
Communication Distance	10 to 20 m					
Acquisition of License	Japan:TELEC	US:FCC Canada:IC	EU:CE China:CMIIT	Japan:TELEC	US:FCC Canada:IC	EU:CE China:CMIIT

Note • Usage circumstance affects communication distance.

- Communication error occurs due to noise and shielding material between transmitter and receiver.
- Contact Tohnichi for conditions of wireless certification acquisition for each country.

Optional accessory AC Adapter/BA-8 (AC100V to 240V) Protective Cover/BL-PCV



Example of use.



Example of use.

YouTube Product movies are available. Visit Tohnichi TV.
<https://www.youtube.com/c/TohnichiTV>

TOHNICHI MFG. CO., LTD.
 URL <http://www.global-tohnichi.com>
 E-Mail overseas@tohnichi.co.jp
 N.V. TOHNICHI EUROPE S.A.
 E-Mail tohnichi-europe@online.be
 TOHNICHI AMERICA CORP.
 URL <http://www.tohnichi.com>
 E-Mail inquiry@tohnichi.com
 TOHNICHI SHANGHAI MFG. CO., LTD.
 URL <http://www.tohnichi-sh.com>
 E-Mail sales@tohnichi-sh.com

